

This Issue

From the GOSHA Chairman's
Pen

Health & Safety News

In Court

Myth of the Month

GOSHA News

GOSHA Awards

Features

From the GOSHA Chairman's Pen....

It's been quite a month. Lots of press interest in the 2009 accident statistics, the launch of our 2010 health & safety awards kindly sponsored by Insurance Corporation (with a category for individuals for the first time) which will be presented by our Minister, Commerce and Employment, Carla McNulty Bauer at our dinner on 11 November 2010, a memorable and inspiring visit to the Ronez quarry (see the article in this issue and more photos at www.gosha.org.gg) and the asbestos Approved Code of Practice (ACoP) is ready to be introduced into Guernsey law.

The asbestos ACoP is a very important and welcome guide for all businesses and it is essential that it is followed to help employers, building owners and all premises occupiers to meet the requirements of the 1987 Health & Safety Ordinance.

Asbestos was widely used in buildings in Guernsey up to the 1990s and, whilst most people will appreciate that it is a dangerous substance with potentially fatal results if disturbed, too often little appropriate regard is taken of its presence in buildings which are used by people every day. The long latency period for its effects to appear can make some complacent but take note of the death statistics summarised in the ACoP to counter any feelings of complacency!

Beckie has included a useful article in this issue – please take a few minutes to read it - and come along to the presentation on asbestos and the Guernsey ACoP, which will be delivered by the island's leading asbestos consultant, Angus McLellan of Normandie Analytical Services, at The Farmhouse Hotel at 6.30pm on Wednesday 30 June 2010.

And we hope you will nominate your business (and/or a colleague or other worthy individual) for one of our health & safety awards. At this stage, we are seeking just expressions of interest, to be sent to our secretary, Jon Coyde.

Andrew Mills
Chairman, Guernsey Occupational Safety & Health Association

GOSHA NEWS

Forth coming Events

Wednesday 30th June 2010

Venue - the Farmhouse (pre booked)

Open Event: An interesting health & safety presentation:

Topic - A presentation on Asbestos and the Guernsey ACoP

Angus McLellan of NAS Laboratories Limited.

If you are interested in attending this event, please visit our website:

<http://www.gosha.org.gg/>

for more details.

GOSHA AWARDS

Following the great success of last year's event, GOSHA is again holding its annual awards for excellence in health & safety. In addition to the categories relating to the size of the organisation, nominations will be available for individuals who have performed highly in health & safety along with recognition for particular sectors of commerce of industry. Watch this space on how to make a nomination for awards.

Health & Safety News

England

Chemical incident closes Science Museum

A chemical incident at London's Science Museum resulted in its closure for the day and medical treatment for several members of the museum's staff and contractors who complained of irritation to the eyes and airways.

England

Aircraft collides with car

It remains unclear whether mechanical failure or human error caused the collision of an AT3 light aircraft and a car at North Weald Airfield. The pilot had aborted an attempted landing but crashed into the car during a second attempted landing. The car's occupants were unhurt and managed to pull the pilot clear of the burning plane. The pilot was taken to hospital in Harlow with a suspected broken leg.

Austria

Gardener impaled on fence

A Viennese gardener was admitted to the city's Lorenz-Bohler Hospital after falling while cutting high shrubbery and impaling himself on

a fence in a garden in Wallmodengasse in Vienna.

The fence pierced his rib cage and came out through his shoulder, colleagues positioned a ladder to bear his weight until fire crews arrived with hydraulic scissors to cut him free.

Malta

Explosion at fireworks factory

A 62-year old worker was critically injured in an explosion and fire while mixing chemicals in the open outside the 25th November fireworks factory in Tas-Silg, 4 other workers sustained non-life-threatening injuries. Explosives stored inside the factory did not explode.

In Court

England

Company fined over fire safety breaches

At Chester Crown Court the owner of P and S Ashley Timberworks Ltd of Sandbach has been fined £80K after pleading guilty to 8 breaches of the Regulatory Reform (Fire Safety) Order 2005. Lack of a suitable and sufficient risk assessment attracted a £30K fine; £20K for a failure to take suitable and sufficient preventative and



protective measures; and £30K for 6 other infractions, including insufficient means of raising the alarm in the event of fire and unsuitable means of escape. Additionally, costs of £50,300 were to be paid to Chester Fire and Rescue Service.

The company was taken to court as a result of repeatedly failing to carry out essential fire safety work in the business.

England

Hants company fined over asbestos handling

At Bournemouth Crown Court Savoir Developers of Colchester were fined a total of £15K plus £10,461 in costs after pleading guilty to 2 breaches of the Control of Asbestos Regulations over a failure to properly assess whether asbestos might be present and failing to reduce the spread of asbestos on a site in Market Street, Poole, in March 2008. The public and employees were exposed to asbestos-containing material.

England

Worker survived crushing accident at Forest Gate site

KP Gardner Builders were fined £7K plus £6,969 in costs at City of London Magistrates' Court after pleading guilty to a breach of S.3(2) of the Health & Safety at Work etc Act 1974 over an accident at a site in Field Road, Newham, where a 41-year old builder broke his back and ribs when the bricks of an unsecured wall fell 7 metres down on him in windy conditions at a partially constructed block of flats. HSE investigation established there was a failure to properly plan, manage and monitor work at the site.

Myth of the Month

You don't need to secure your load if you're just driving down the road



The reality

If not properly secured, vehicle loads can become unsafe, even over a short distance.

Loads that haven't been firmly tied down increase the risk of vehicle rollover and spillage. They risk the lives of drivers and other road users, and can also cause annoying traffic disruption.

More than 1200 people a year are injured as a result of unsafe loads, and millions of pounds are lost in damaged goods.

Don't take the risk – make sure your load is restrained and contained



Asbestos Guernsey ACoP.

Following consultation with interested parties, Commerce and Employment formally approved the Code of Practice entitled, "Management of Exposure to Asbestos in Workplace Buildings and Structures" at its meeting of the 27th April 2010.

The Approved Code of Practice provides practical advice on how to meet the legal requirements set out in the Health & Safety at Work (General) (Guernsey) Ordinance, 1987 and if the advice is followed, that will be enough to comply with the law in respect of those specific matters regarding asbestos to which the ACoP refers. Alternative methods maybe used to those set out in the ACoP in order to comply with the law, however, the ACoP has a special legal status. If you are prosecuted for a breach of health and safety law, and it is proved that you did not follow the relevant provisions of the ACoP, you will need to show that you have complied with the law in some other way or the court will find you at fault.

The ACoP establishes the procedures to be followed in order to reduce the risks from asbestos to an acceptable level. The document also indicates where it will be necessary to obtain specialist assistance in determining or controlling the risks.

The guidance is relevant to all who have responsibility for maintenance, repair and management of premises being used as a workplace, including shops, offices, industrial buildings, hotels, schools, residential homes for the elderly etc. Responsible persons may include building owners, managing agents, tenants and others who have legal responsibility for the premises.

Employees and safety representatives may also find the ACoP useful. Where buildings are occupied by tenants, the extent of responsibility of all parties, including the building owner, will depend upon the contract or other tenancy agreement.

Employers have a duty to ensure, so far as is reasonably practicable, the health, safety and welfare of their employees and others who may be affected by their undertaking, as applicable under the Health and Safety at Work (General) (Guernsey) Ordinance, 1987. Employers must also ensure that any work with asbestos is covered by their insurance policy, as required by the Employers' Liability (Compulsory Insurance) (Guernsey) Law, 1993. Employers should also check their policy documents to ensure that work with any asbestos containing material is covered. More information on your other legal responsibilities may be obtained from the Health and Safety Executive, or through the website, www.hse.guernsey.gg

Management of Exposure to Asbestos in Workplace Buildings and Structures ACoP is divided into four parts.

PART ONE of the ACoP sets out the background to the use of asbestos and the potential risks to health which result from the inhalation of asbestos fibres.

PART TWO sets out the manner in which employers and others who have responsibility for the maintenance and repair of buildings and structures, can manage the risks from exposure to asbestos through the development of an asbestos management plan.

PART THREE contains guidance on work with asbestos insulation, asbestos insulation board and asbestos coatings which must be removed by competent, experienced asbestos removal contractors.

PART FOUR contains guidance on work with other asbestos containing materials.

Load Safety

According to the HSE more than 1,200 people a year are injured due to the unsafe loading of vehicles this cost UK businesses millions of pounds in damaged goods.

Even a carefully packed load can shift in transit if it is not secured, posing a risk upon arrival at its destination as well as whilst being transported. If an unsecured load shifts inside the trailer it becomes more difficult to unload, it may need to be unloaded manually. Sending an employee onto the trailer bed puts them at risk from falls, a fall does not have to be far for the injury to be serious.

Loads can shift, even heavy ones, in serious cases a load that shifts can cause the vehicle to become unstable and overturn or if a gap is present between the load and the headboard the load can shift forward risking the life of not only the driver but other road users. During transport a box sided vehicle will stop the load falling out but without proper restraints the load can move within the vehicle. Even at the low speeds on the Island roads, the forces exerted whilst under braking or turning can lead to the load shifting. Spilled loads can close road and cause delays as well as damaging the product carried leading to financial cost business.

To secure a load safely you need to make sure it is:

- restrained – tied firmly down to the load bed; and
- contained – it can't move around, shift, inside the vehicle.

The employer must ensure that the correct equipment is available to secure and load vehicles safely. Strong chains or webbing straps are used for lashing down loads, rope is not a suitable lashing. The lashings should be either chain or webbing not both in the same lashing and these should then be attached directly to the vehicle. Straps should be checked regularly, damaged or broken ones replaced. The headboard should be sufficiently robust to resist movement of the load, if it is not possible to fill the load to the front bulkhead, intermediate bulkheads, other methods of restraint should be used. It is important to consider the distribution of weight of the load on the vehicles axles. The curtains on curtain sided trailers are for weather protection not to secure the load on the trailer, goods should be secured as if they were being transported on a flat bed.

An important step in keeping employees safe is planning how the load is to be secured any problems can be flagged up before they become an issue. The load plan should include, who will apply the load restraints and what they should be, how the load will be placed on the trailer bed, who will unload the vehicle and what equipment will be required, who the driver should report to on arrival and what the driver should do if the load shifts during the journey. Don't rely on word of mouth a written load plan should be produced for each load.

The responsibility for ensuring that the load is loaded so that it does not present a danger to others is that of the employer responsible for sending the load. Before leaving the depot the driver should be aware of how the load is loaded especially if he did not witness it being loaded. The load plan should travel with the load and be made available to the delivery site. Employers should ensure all staff has the appropriate training and the correct equipment to load vehicles safely.

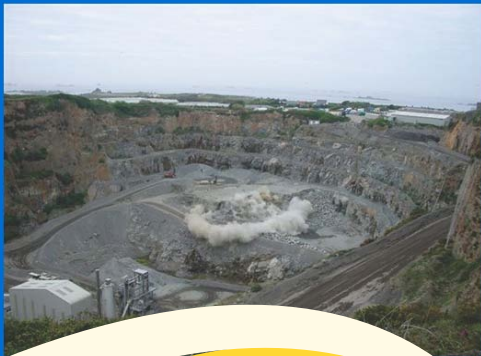


GOSHA visit to Ronez Quarry

A blast was had by all as GOSHA members visited Ronez Les Vardes Quarry on 20th May. It was a fascinating tour of the quarry Steve Roussel with his expert knowledge gave us great insight into the high risk activities carried out daily on the site. The tour began with us being driven down deep into the quarry to watch the laying of the final explosive charge in the pre drilled whole before being taken by bus to a safe vantage point to watch 5,000 tonnes of rock being blasted from the rock face.



The quarry lay still as the final safety checks were made before the authorisation was given and the countdown began. We watched as within split second each of the individual charges exploded leading to the rock face being torn apart, the rock falling effortlessly back down to earth. The whole process was quieter and neater than most of us expected.



Upon returning to the quarry we examined at first hand the aftermath of this impressive controlled explosion. The neatness and preciseness of the extraction was the first thing to hit you as was the faint aroma of explosives.



Steve explained the processes the blasted rock would go through, the safety measure put in place for its removal, sorting, storage and use. The crushed rock aggregate forms the basis of many products produced by Ronez including asphalt for our roads, ready mixed concrete as well as different sizes of aggregate.

The team work and communication between the Ronez employees is evident as is their knowledge and management of health and safety in an environment with high risk where many hazards pose a very real danger. The housekeeping over the whole site is impressive as is the dust management. The investment by this business in the appropriate equipment and training for staff has nurtured a positive health and safety culture which ensures the well-being of employees and visitors alike. GOSHA sends its sincere thanks to Ronez for organizing such an informative visit.

About GOSHA

GOSHA is a voluntary, non-profit making organisation, set up in November 2004 to support businesses and other organisations in Guernsey by:

- Encouraging best practice in occupational safety and health
- Helping members develop professional standards within their sphere of work.
- Providing a forum for discussion and sharing information
- Developing a network for those with responsibilities for occupational health and safety
- Organising presentations by experts in relevant subjects or topics of interest
- Providing workshops on topical issues
- working closely with the Health and Safety Inspectorate, professional consultancies and other occupational safety and health associations.

GOSHA Newsletter
May/June 2010

Kauri House, Rue Cohu,
Castel, Guernsey, GY5 7TG

Tel 01481 255774

www.GOSHA.org.gg